



ao intramedullary nailing tibia



All

## Images

## Videos

## Shopping

## News

More

## Settings

## Tools

View saved

SafeSearch



540 x 400 - [www2.aofoundation.org](http://www2.aofoundation.org)

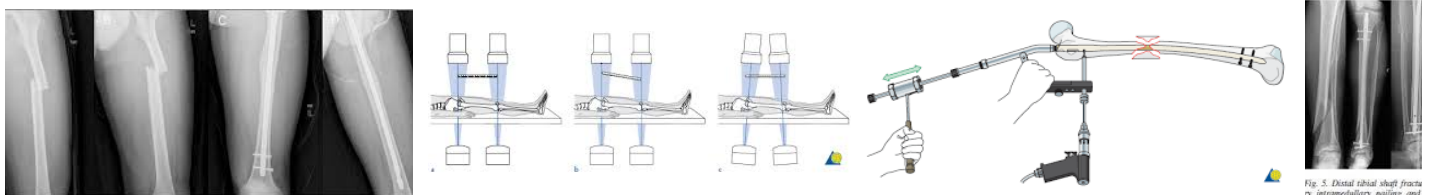
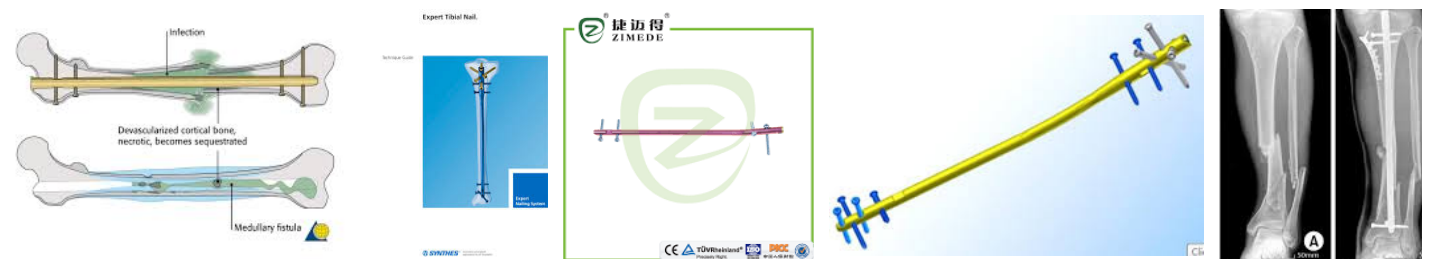
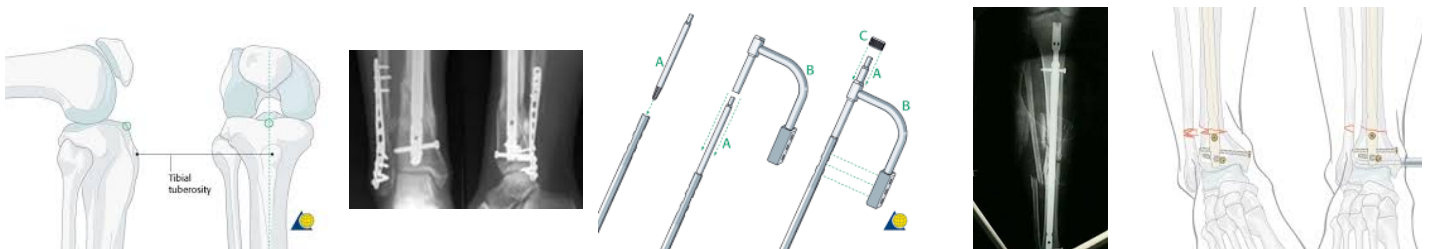
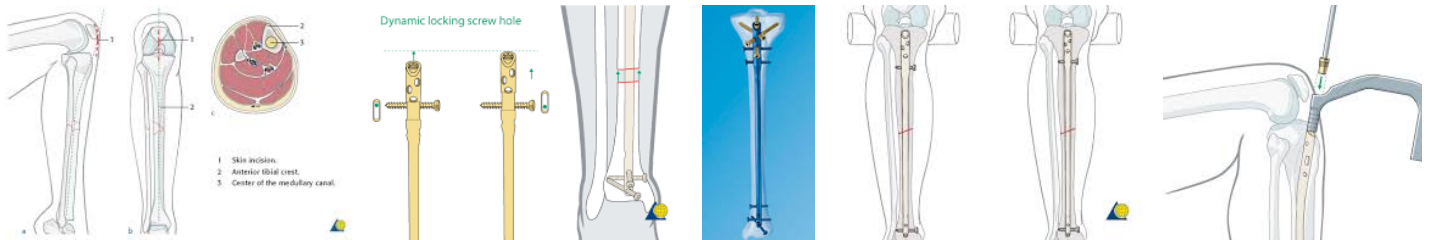


Fig. 5. Distal tibial shaft fracture intramedullary nailing and a 33-year-old male patient.



**Figure 1** - Appropriate technique for using Ender pins. Proper positioning of the pins provides sufficient stability for union and prevents proximal migration.



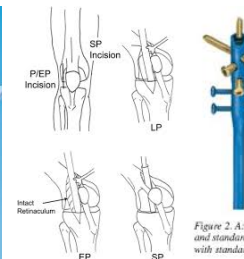


Figure 2. A: and standard with standa

Variable	Category	n	%
Technique	Plute	71	65.8
	Naïf	42	37.37
Gender	male	89	78.8
	female	24	21.2
Type	Type A	49	43.4
	Type B	40	35.4
	Type C	24	21.2
Site	Medium	69	62.2
	Distal	49	43.4
	Segmented	7	6.2
Side	Proximal	7	6.2
	Right	7	6.2
	Left	63	55.9
Rotation	Null	16	14.2
	ERI	66	58.5
	IRI	52	45.7
Fracture	Closed	62	54.6
	Open	51	45.1